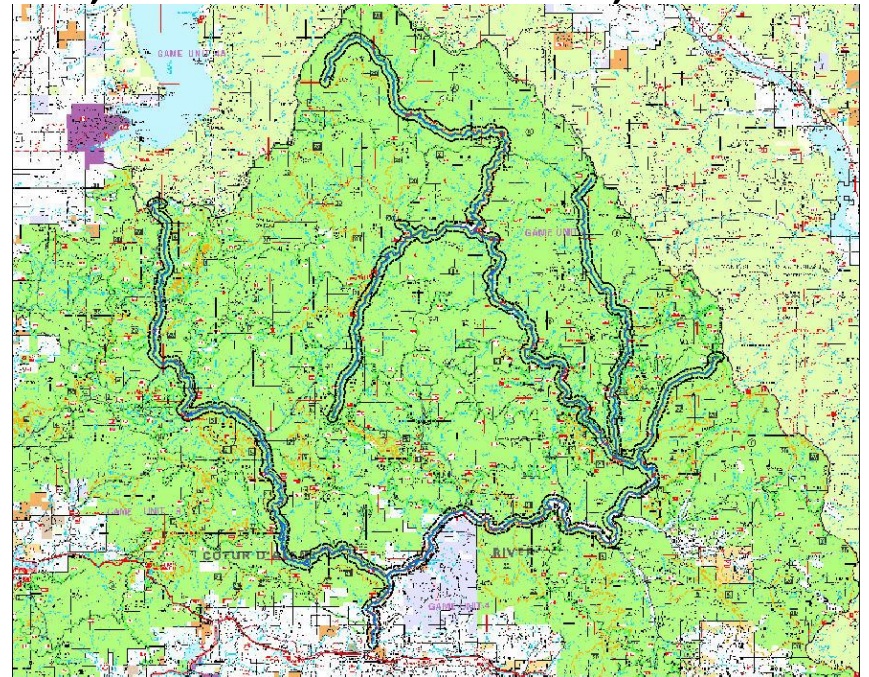


Respect the River!

Implementing the CDA River Corridor
Plan and North Fork CDA Cooperative
Recreation Plan

CDA River Corridor Management Plan

- Management tool for the USFS
- Covers 150 miles along the North Fork and Little North Fork of the CDA River, Shoshone Creek, Lost Creek and Tepee Creek



Coeur d'Alene River Corridor Planning Area

Collaboration with WAG Cooperative Recreation Plan

- North Fork CDA Cooperative Recreation Plan focuses on the lower 21 miles of the North Fork Coeur d'Alene River
 - Includes both public and private land from the confluence with the South Fork CDA River to Prichard Creek
- Both plans share the same
 - Goals
 - Strategies
 - Education Plan
- Seamless implementation across jurisdictions

Need for Action

- Sanitation along the river corridor
- Safe and adequate public access to the river
- Resource Protection

Goals of USFS River Plan

1. Provide recreation users with a variety of safe, enjoyable, high quality recreation experiences along the corridors of the North Fork and the Little North Fork of the Coeur d'Alene River.
2. Restore and rehabilitate riparian areas where resource damage has occurred and prevent new impacts associated with recreational use.
3. Identify locations where development may be appropriate to improve access and safety for recreationists.
4. Provide a framework for identifying locations that need rehabilitation.
5. Educate river corridor users about the river environment, safety, recreation opportunities, "Leave No Trace" ethics, and how to avoid negative environmental impacts.

Goals continued

6. Maximize efficiency and effectiveness by developing partnerships and volunteer opportunities with federal and state resource management agencies, counties, landowners, user groups and other entities.
7. Encourage development and rehabilitation that supports the local economy by promoting existing local businesses and increasing local employment.
8. Maintain and restore watershed, riparian, and stream channel conditions needed to conserve fish habitat for westslope cutthroat trout, bull trout, and other aquatic species, and to provide a high quality recreational fishing experience on the North Fork of the Coeur d'Alene River.

Site Prioritization

Sites prioritized using the following resources:

- Condition and use inventories of dispersed sites
- WAG Cooperative Recreation Plan
- Professional judgment (recreation, aquatics, etc)

High Priority Sites for Development and Rehabilitation

1. Graham Creek
2. Hudlow Junction
3. Prichard Bridge Day Use
4. Presidents Flats
5. Grizzly Creek
6. Shoshone Gauge Station
7. Big Hank Meadows
8. Milepost 2.8 on Old River Road
9. Kit Price
10. Bumblebee Bridge

Implementation

Highest Priorities for implementation:

- Improve sanitation
- Improve river access
- Prevent and remediate resource degradation
- Maintain Recreational fishing opportunities
- Maintain or improve habitat for aquatic species

Short term Implementation

- Develop and implement education plan emphasizing Leave No Trace ethics
- Install educational signs along corridor
- Seek funding for portal signs
- Develop a list of prioritized sites
- Begin environmental analysis for site rehabilitation
- Research and identify funding sources for implementation of priority development and rehabilitation projects
- Form partnerships with local agencies governments, interest groups and individuals to support implementation
- Utilized local suppliers and contractors to implement on-the-ground work where possible

Short term implementation continued

- Hire a River Ranger
- Make campgrounds available to the public during hunting season
- Improve boat launch opportunities
- Coordinate with WAG to develop and rehabilitate Forest Service and County Land near Bumblebee Bridge
- Discourage motorized recreation access within 25 feet of the river corridor